


DYE SUBLIMATED ALUMINUM PLATES



MADE IN THE U.S.A.

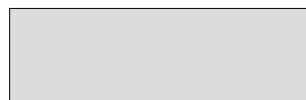
MFG:
MODEL :
SERIAL #:
PART #



White
Alum201



Satin Gold
Alum202



Satin Silver
Alum203

VIVASUB™ ALUMINUM
.020 Thickness

Indoor use only

Custom sizes up to:
11" x 12" for non-full bleed
10" x 12" for full bleed

Full Color

When ordering photo badges, the white aluminum badge is recommended. The gold & silver do not produce a distinct image.

3 Colors Available
Specify Color when ordering

For an adhesive back,
add 10%.

For hole installation,
add \$0.50(R) per hole

Setup Fee: \$20(V) Repeat Setup Charge: \$10(V) PMS Color Match: \$35(V) Personalization: \$1(V)

Item #	Sq In	1	3	6	10	25	50	100	250	500
EZ1	Up to 6	\$15.78	\$14.00	\$12.26	\$11.18	\$10.52	\$10.32	\$10.12	\$9.72	\$9.53
EZ7	6.1 - 12	\$16.69	\$14.87	\$13.06	\$11.91	\$11.24	\$11.04	\$10.83	\$10.42	\$10.22
EZ13	12.1 - 24	\$18.51	\$16.62	\$14.66	\$13.37	\$12.68	\$12.46	\$12.24	\$11.82	\$11.61
EZ25	24.1 - 36	\$20.33	\$18.36	\$16.27	\$14.82	\$14.13	\$13.89	\$13.66	\$13.22	\$12.99
EZ37	36.1 - 48	\$22.15	\$20.11	\$17.87	\$16.28	\$15.57	\$15.32	\$15.07	\$14.61	\$14.37
EZ49	48.1 - 60	\$23.97	\$21.86	\$19.47	\$17.74	\$17.01	\$16.74	\$16.48	\$16.01	\$15.76
EZ61	60.1 - 72	\$25.79	\$23.61	\$21.07	\$19.19	\$18.45	\$18.17	\$17.89	\$17.41	\$17.14
EZ73	72.1 - 84	\$28.14	\$25.87	\$23.14	\$21.08	\$20.31	\$20.02	\$19.72	\$19.22	\$18.93
EZ85	84.1 - 110	\$32.09	\$29.65	\$26.61	\$24.23	\$23.44	\$23.11	\$22.78	\$22.25	\$21.93
EZ110	110.1 - 132	\$38.15	\$35.48	\$31.95	\$29.09	\$28.25	\$27.87	\$27.49	\$26.91	\$26.54


(R)

For hook & loop
see page 1409

			
H40	H41	H50	H52
Flat Rosette	Crown Rosette	Slotted Screw	Phillips Screw
Gold or Silver	Gold or Silver	Gold or Silver	Gold or Silver
\$0.20 ea.	\$0.20 ea.	\$0.20 ea.	\$0.20 ea.
3/8" dia	3/8" dia		

(R)

DYE SUBLIMATED ALUMINUM PLATES



Made in the USA

MFG:	American Aeronautical Specialty Products, Inc.
MODEL :	BXA 200
SERIAL #:	BM10202
PART #	RAD37

QUALITY CONTROL

INSPECTED BY: 51 Lot # 712 DEPT #: QC3

Indoor use only

UNISUB™ ALUMINUM
.030 Thickness



White Only UN5570

Custom sizes up to:
 11" x 12" for non-full bleed
 10" x 12" for full bleed.

Full Color

For an adhesive back,
 add 10%.

For hole installation,
 add \$0.50(R) per hole

Setup Fee: \$40(V) Repeat Setup Charge: \$20(V) PMS Color Match: \$35(V) Personalization: \$3(V)

Item #	Sq In	1	3	6	10	25	50	100	250	500
UN1	Up to 6	\$14.30	\$12.64	\$11.85	\$11.66	\$11.14	\$11.08	\$11.03	\$10.76	\$10.71
UN7	6.1 - 12	\$16.10	\$14.36	\$13.53	\$13.29	\$12.77	\$12.71	\$12.64	\$12.37	\$12.31
UN13	12.1 - 24	\$18.65	\$16.80	\$15.91	\$15.61	\$15.08	\$15.00	\$14.93	\$14.64	\$14.57
UN25	24.1 - 36	\$22.26	\$20.24	\$19.27	\$18.89	\$18.34	\$18.25	\$18.15	\$17.85	\$17.76
UN37	36.1 - 48	\$25.86	\$23.68	\$22.62	\$22.17	\$21.60	\$21.49	\$21.38	\$21.06	\$20.96
UN49	48.1 - 60	\$29.47	\$27.12	\$25.98	\$25.45	\$24.86	\$24.74	\$24.61	\$24.28	\$24.16
UN61	60.1 - 72	\$33.07	\$30.56	\$29.34	\$28.72	\$28.12	\$27.98	\$27.84	\$27.49	\$27.35
UN73	72.1 - 84	\$36.67	\$34.00	\$32.70	\$32.00	\$31.38	\$31.22	\$31.07	\$30.70	\$30.55
UN85	84.1 - 110	\$44.49	\$41.46	\$39.98	\$39.10	\$38.45	\$38.25	\$38.06	\$37.66	\$37.47
UN110	110.1 - 132	\$56.50	\$52.93	\$51.18	\$50.02	\$49.32	\$49.07	\$48.82	\$48.36	\$48.12

(R)

For hook & loop
 See page 1409

			
H40	H41	H50	H52
Flat Rosette	Crown Rosette	Slotted Screw	Phillips Screw
Gold or Silver	Gold or Silver	Gold or Silver	Gold or Silver
\$0.20 ea.	\$0.20 ea.	\$0.20 ea.	\$0.20 ea.
3/8" dia	3/8" dia		

(R)

CUSTOM DYE SUBLIMATED LICENSE PLATES



UN5656
Gloss White Background



UN5948
Gloss Silver Background

Full Color **Aluminum** License Plates

- 5-7/8" x 11-7/8"
- Standard Hole Pattern
- Bright Vivid Colors.

Bulk Shipped.

Approx. Shipping Info:
Weight: 6 oz./plate
Box size: 6" x 12"

RGB Colors are normally used.

If customer's design is RGB or CMYK, the plate will be made to your design and colors.

Setup Fee: \$40(V)	Photo: \$5.00(V)	Repeat Setup Fee: \$20(V)
Personalization: \$3(V)	PMS Color Match Fee: \$35(V)	

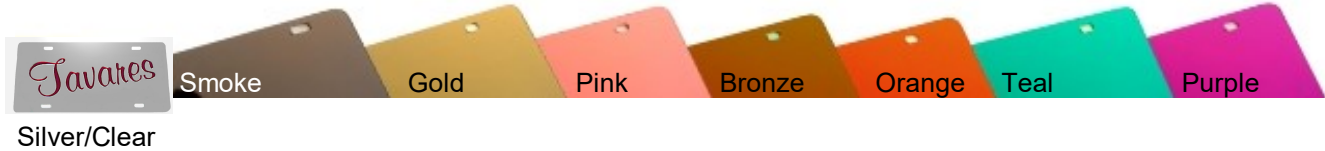
Item #	Thickness	1	3	6	12	25	50	100	250	500
UN5656	1/32" (.030)	\$33.16	\$31.65	\$30.14	\$29.99	\$27.00	\$24.73	\$24.61	\$24.48	\$24.36
UN5948	3/64" (.045)	\$34.75	\$33.17	\$31.60	\$31.44	\$28.26	\$25.72	\$25.59	\$25.46	\$25.33

(R)

CUSTOM LASER CUT MIRROR LICENSE PLATES

Acrylic laser cut Mirror License Plates are .100 (1/10") thick with a .060 thick backing plate adhered to back. Any two or three color combination of mirror plate colors may be used together. Mounting holes are in the standard location.

MIRROR PLATE COLORS



Minimum Text Size: 1/2"

Minimum Character Thickness: .150"

Setup Fee: \$40(V)

Personalization: \$3(V)

Repeat Setup Fee: \$20(V)

ITEM #	Description	1	3	6	12	25	50	100	250
LP126MIR	2 Color Mirror Plate	\$86.48	\$85.61	\$84.75	\$83.88	\$83.02	\$82.15	\$81.29	\$80.42
LP126MIR3	3 Color Mirror Plate	\$116.51	\$115.34	\$114.18	\$113.01	\$111.85	\$110.68	\$109.52	\$108.35

(R)

CUSTOM CUT VINYL MIRROR LICENSE PLATES

Cut Vinyl Mirror License Plates are .100 (1/10") thick acrylic, with a .060 thick backing plate adhered to back. Most standard vinyl colors are available. Includes one color of vinyl. Mounting holes are in the standard location.



MIRROR PLATE COLORS



Silver/Clear



Opaque Black



Minimum Text Size: 1/2"

Setup Fee: \$40(V) Personalization: \$3(V)
Repeat Setup Fee: \$20(V)

ITEM #	Description	1	3	6	12	25	50	100	250	500	
LP126VCMIR	Mirror Plate	\$51.73	\$51.21	\$50.69	\$50.17	\$49.66	\$49.14	\$48.62	\$48.11	\$47.59	(R)

CUSTOM CUT VINYL & FULL COLOR METAL LICENSE PLATES

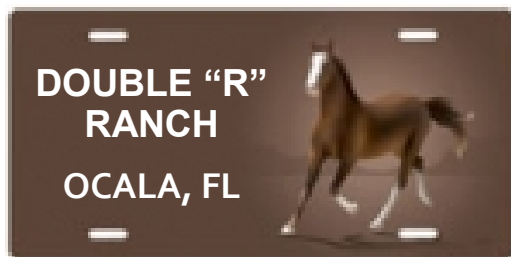
CUT VINYL



LP126WICV

Includes two colors of cut vinyl.

- 12" x 6" White Aluminum License Plates
- 1/2" Corner Radii
- 1" x 1/4" Oblong Slots in each corner.
- .025" Thick (Approx. 1/32")



FULL COLOR

LP126WIFC



Printed Vinyl
3 year life expectancy
before beginning to fade.

- Full Color Printed Vinyl
- Laminated for longer life.
- 12" x 6" White Aluminum License Plates
- 1/2" Corner Radii
- 1" x 1/4" Oblong Slots in each corner.
- .025" Thick (Approx. 1/32")

Lamination:
2 mm thick clear UV PVC film.
Extends the fade life
expectancy to 4 years.

Setup Fee: \$40(V) Repeat Setup Fee: \$20(V)
Personalization: \$3(V)

Item#	Description	1	3	6	12	25	50	100	250	500
LP126WICV	Cut Vinyl	\$37.22	\$35.60	\$32.04	\$31.72	\$30.53	\$29.88	\$29.16	\$28.85	\$28.54
LP126WIFC	Full Color	\$38.74	\$36.90	\$36.53	\$36.16	\$34.91	\$34.21	\$33.43	\$33.08	\$32.73

(R)

ENGRAVED METALGRAPH PLUS SIGNS

Metalgraph Plus is the first metallic engraving laminate engineered for exterior use and formulated for exceptional corrosion resistance and UV stability.



MP9-314
Brushed Stainless Steel
Black Core



MP9-364
Brushed Bright Nickel
Black Core



MP9-764
Brushed Antique Gold
Black Core



MP9-864
Brushed Copper Penny
Black Core



Rectangular signs will have beveled edges unless ordered otherwise.



WARNING: Cancer and Reproductive Harm - www.P65Warnings.ca.gov

1/16" Thick - 2 Ply Metalgraph Plus

Add 10% to add adhesive tape to back.

Setup Fee: \$20(V)

Repeat Setup Fee: \$10(V)

Maximum size:
18" x 24"

Item #	Sq. In	1	2	3	5	10	25	50	100	250
MG1	Up to 6	\$12.93	\$12.56	\$12.48	\$12.41	\$12.33	\$12.26	\$12.18	\$12.11	\$12.03
MG7	6.1 - 12	\$14.91	\$14.48	\$14.39	\$14.31	\$14.22	\$14.13	\$14.04	\$13.96	\$13.87
MG13	12.1 - 24	\$19.41	\$18.85	\$18.73	\$18.62	\$18.51	\$18.39	\$18.28	\$18.17	\$18.06
MG25	24.1 - 36	\$26.97	\$26.19	\$26.03	\$25.87	\$25.72	\$25.56	\$25.40	\$25.25	\$25.09
MG37	36.1 - 48	\$33.64	\$32.66	\$32.46	\$32.26	\$32.07	\$31.87	\$31.68	\$31.48	\$31.28
MG49	48.1 - 60	\$40.30	\$39.12	\$38.89	\$38.65	\$38.42	\$38.18	\$37.95	\$37.71	\$37.48
MG61	60.1 - 72	\$45.97	\$44.63	\$44.36	\$44.09	\$43.82	\$43.56	\$43.29	\$43.02	\$42.75
MG73	72.1 - 84	\$51.19	\$49.69	\$49.40	\$49.10	\$48.80	\$48.50	\$48.20	\$47.91	\$47.61
MG85	84.1 - 100	\$59.62	\$57.88	\$57.53	\$57.19	\$56.84	\$56.49	\$56.14	\$55.80	\$55.45
MG101	100.1 - 150	\$85.93	\$83.43	\$82.93	\$82.43	\$81.92	\$81.42	\$80.92	\$80.42	\$79.92
MG151	150.1 - 200	\$110.26	\$107.05	\$106.41	\$105.76	\$105.12	\$104.48	\$103.84	\$103.19	\$102.55
MG201	200.1 - 250	\$132.88	\$129.01	\$128.23	\$127.46	\$126.69	\$125.91	\$125.14	\$124.36	\$123.59
MG251	250.1 - 300	\$155.77	\$151.23	\$150.32	\$149.41	\$148.51	\$147.60	\$146.69	\$145.78	\$144.88
MG301	300.1 - 350	\$176.49	\$171.35	\$170.32	\$169.30	\$168.27	\$167.24	\$166.21	\$165.18	\$164.15
MG351	350.1 - 400	\$196.68	\$190.95	\$189.80	\$188.66	\$187.51	\$186.37	\$185.22	\$184.07	\$182.93
MG401	400.1 - 450	\$216.86	\$210.55	\$209.28	\$208.02	\$206.76	\$205.49	\$204.23	\$202.97	\$201.70

Hook or Loop

(R)

1/2" Wide	3/4" wide	2" wide	Cut Fee	Application Fee
\$0.15(V) per inch	\$0.17(V) per inch	\$0.26(V) per inch	\$0.15(V) per cut	\$0.50(V) each

DUETS LASER XT ENGRAVEABLE PLASTIC

Material: Micro Surfaced Impact Acrylic
Thickness: .060"

This material can be used for name badges, name plates, wall signs, etc.
 The acrylic is UV stable and can be used indoor or outdoor.



Black Surface
White Core
L-100-116



Red Surface
Yellow Core
L-102-146



Light Green Surface
White Core
L-122-116



Red Surface
White Core
L-102-116



Maroon Surface
White Core
L-117-116



Evergreen Surface
White Core
L-108-116



White Surface
Black Core
L-111-106



Pink Surface
White Core
L-119-116



Beige Surface
Chocolate Brown Core
L-114-166



Yellow Surface
Black Core
L-116-106



Pink Surface
Black Core
L-119-106



Khaki Surface
Black Core
L-115-106



Blue Surface
White Core
L-104-116



Light Blue Surface
White Core
L-121-116



Brown Surface
White Core
L-110-116



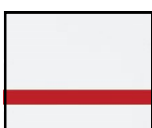
Dove Grey Surface
White Core
L-112-116



Grey Surface
White Core
L-118-116



Choc. Brown Surface
White Core
L-109-116



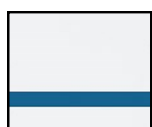
White Surface
Red Core
L-111-136



Blue Surface
Yellow Core
L-104-146



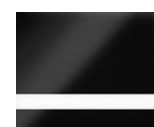
Cool Grey Surface
Black Core
L-113-106



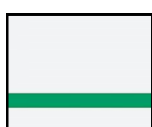
White Surface
Blue Core
L-111-156



Sapphire Surface
White Core
L-105-116



Gloss Black Surface
White Core
L-101-116



White Surface
Spring Green Core
L-111-176



Purple Surface
White Core
L-105-116



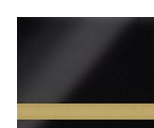
Black Surface
Yellow Core
L-100-146



White Surface
Evergreen Core
L-111-186



Navy Surface
White Core
L-106-116



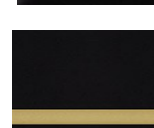
Gloss Black Surface
Gold Core
L-100-126



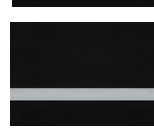
Orange Surface
White Core
L-103-116



Spring Green Surface
White Core
L-107-116



Black Surface
Gold Core
L-100-126



Black Surface
Silver Core
L-100-196

DUETS LASER ENGRAVEABLE PLASTIC

Metals XT

Material: Micro Surfaced Impact Acrylic
Thickness: .060"

This material can be used for name badges, name plates, wall signs, etc.
The acrylic is UV stable and can be used indoor or outdoor.



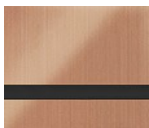
Brushed Old Gold Surface
Red Core
L-903-136



Brushed Old Gold Surface
Blue Core
L-903-156



Brushed Old Gold Surface
Black Core
L-903-106



Brushed Copper Surface
Black Core
L-904-106



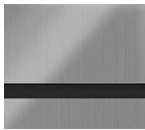
Brushed Stainless Surface
Red Core
L-901-136



Brushed Stainless Surface
Blue Core
L-901-156



Brushed Stainless Surface
Black Core
L-901-106

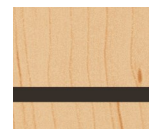


Brushed Nickel Surface
Black Core
L-902-106

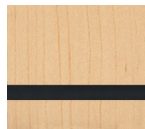
Laser Indoor

Material: Micro Surfaced Impact Acrylic
Thickness: .060"

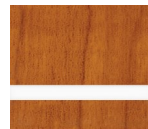
This material can be used for name badges, name plates, wall signs, etc.
The acrylic is not recommended for outdoor use.



Birch Surface
Chocolate Brown Core
L-W52-166



Birch Surface
Black Core
L-W52-106



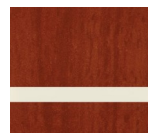
Cherry Surface
White Core
L-W50-116



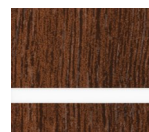
Cherry Surface
Almond Core
L-W50-206



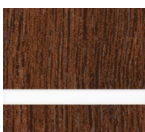
Royal Mahogany Surface
White Core
L-W51-116



Royal Mahogany Surface
Almond Core
L-W51-206



Black Walnut Surface
White Core
L-W11-116



Walnut Surface
White Core
L-W10-116



Brushed Satin Gold Surface
Black Core
L805-106

CUSTOM LASER ENGRAVED SIGNS

Color Selection:
Pages 1409 & 1410
1/16" thick



Maximum Sign Size:
28" L-R x 21" T-B
Maximum Laser Size:
25" L-R x 18" T-B

Rectangular signs will have beveled edges unless ordered otherwise.

For an adhesive back, add 10%.

Capable of cutting most shapes.

Hook or Loop

1/2" wide	3/4" wide	2" wide	Cut Fee	Application Fee
\$0.20(V) per inch	\$0.25(V) per inch	\$0.30(V) per inch	\$0.20(V) per cut	\$0.50(V) each

Setup Fee: \$40(V)

Repeat Setup Fee: \$20(V)

Item #	Sq. In	1	2	3	5	10	25	50	100	250
LES1	Up to 6	\$17.19	\$17.04	\$16.88	\$16.73	\$16.57	\$16.41	\$16.26	\$16.10	\$15.94
LES7	6.1 - 12	\$18.35	\$18.18	\$18.01	\$17.85	\$17.68	\$17.51	\$17.35	\$17.18	\$17.01
LES13	12.1 - 24	\$24.02	\$23.80	\$23.58	\$23.37	\$23.15	\$22.93	\$22.71	\$22.49	\$22.27
LES25	24.1 - 36	\$31.62	\$31.33	\$31.05	\$30.76	\$30.47	\$30.18	\$29.90	\$29.61	\$29.32
LES37	36.1 - 48	\$38.26	\$37.91	\$37.56	\$37.21	\$36.87	\$36.52	\$36.17	\$35.82	\$35.48
LES49	48.1 - 60	\$45.47	\$45.06	\$44.65	\$44.23	\$43.82	\$43.41	\$42.99	\$42.58	\$42.17
LES61	60.1 - 72	\$51.24	\$50.78	\$50.31	\$49.85	\$49.38	\$48.91	\$48.45	\$47.98	\$47.52
LES73	72.1 - 84	\$57.01	\$56.50	\$55.98	\$55.46	\$54.94	\$54.42	\$53.90	\$53.39	\$52.87
LES85	84.1 - 100	\$67.82	\$67.20	\$66.59	\$65.97	\$65.35	\$64.74	\$64.12	\$63.50	\$62.89
LES101	100.1 - 150	\$95.39	\$94.53	\$93.66	\$92.79	\$91.92	\$91.06	\$90.19	\$89.32	\$88.46
LES151	150.1 - 200	\$122.00	\$120.89	\$119.79	\$118.68	\$117.57	\$116.46	\$115.35	\$114.24	\$113.13
LES201	200.1 - 250	\$146.98	\$145.64	\$144.31	\$142.97	\$141.63	\$140.30	\$138.96	\$137.63	\$136.29
LES251	250.1 - 300	\$172.24	\$170.68	\$169.11	\$167.55	\$165.98	\$164.41	\$162.85	\$161.28	\$159.72
LES301	300.1 - 350	\$195.20	\$193.42	\$191.65	\$189.87	\$188.10	\$186.32	\$184.55	\$182.78	\$181.00
LES351	350.1 - 400	\$217.57	\$215.60	\$213.62	\$211.64	\$209.66	\$207.68	\$205.71	\$203.73	\$201.75
LES401	400.1 - 450	\$238.99	\$236.82	\$234.64	\$232.47	\$230.30	\$228.13	\$225.95	\$223.78	\$221.61
LES451	450.1 - 500	\$262.33	\$259.94	\$257.56	\$255.17	\$252.79	\$250.40	\$248.02	\$245.63	\$243.25
LES501	500.1 - 550	\$282.78	\$280.21	\$277.64	\$275.07	\$272.50	\$269.93	\$267.36	\$264.78	\$262.21
LES551	550.1 - 600	\$307.18	\$304.38	\$301.59	\$298.80	\$296.01	\$293.21	\$290.42	\$287.63	\$284.84

(R)

CUSTOM STREET SIGNS

The Federal Government now requires traffic and street signs to meet minimum reflectivity standards. This ruling effects signage on both public and private property.

HIA Type III Prismatic **High Intensity** Reflective Sheeting

This material reflects when light hits it at night and is 10 times more reflective than RA Type one. Signs must be mounted at the proper height to meet the new standards. Seven foot from the bottom of the sign to ground level is the correct height.



Setup Fee: \$20(V) Repeat Setup Fee: \$10(V)
Copy Change Fee: \$3(V)

HIA Type III **High Intensity** Prismatic (Green Only)

Standard Vinyl Lettering

Item #	Size	One Side	Two Sides
B180685HGR28000S	18" x 6"	\$98.28	\$137.59
B240685HGR28000S	24" x 6"	\$118.81	\$166.33
B300685HGR28000S	30" x 6"	\$139.81	\$195.73
B360685HGR28000S	36" x 6"	\$160.54	\$224.76
B240985HGR28000S	24" x 9"	\$160.54	\$224.76
B300985HGR28000S	30" x 9"	\$191.43	\$268.01
B360985HGR28000S	36" x 9"	\$222.39	\$311.34
B420985HGR28000S	42" x 9"	\$321.62	\$450.27

(R)

Reflective Vinyl Lettering

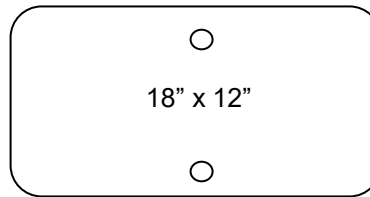
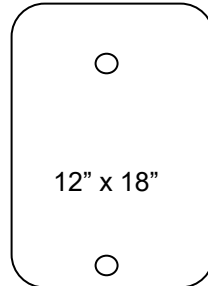
Item #	Size	One Side	Two Sides
B180685HGR28000R	18" x 6"	\$102.92	\$144.09
B240685HGR28000R	24" x 6"	\$125.21	\$175.29
B300685HGR28000R	30" x 6"	\$147.54	\$206.56
B360685HGR28000R	36" x 6"	\$169.83	\$237.76
B240985HGR28000R	24" x 9"	\$169.83	\$237.76
B300985HGR28000R	30" x 9"	\$203.04	\$284.26
B360985HGR28000R	36" x 9"	\$236.32	\$330.84
B420985HGR28000R	42" x 9"	\$337.87	\$473.02

(R)

CUT VINYL .080 THICK REFLECTIVE ALUMINUM SIGNS

White .080 Reflective Signs

Engineer Grade Prismatic reflective finish on one side.



When ordering, specify the width first and the height second.

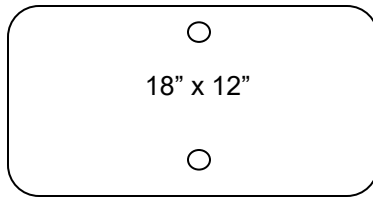
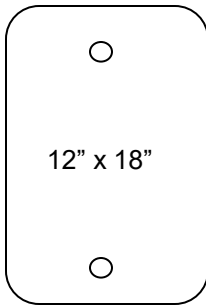
Blanks have 1.5" Standard Federal radius corners.
 Blanks have 3/8" holes top & bottom centered.
 Holes are inset:
 1.0" on 12" x 6" signs.
 1.5" on 12" x 12", 12" x 18", 18" x 12", 24" x 12",
 24" x 18", 36" x 12" signs.
 3.0" on 18" x 18", 18" x 24" signs.

Includes one color of
 reflective vinyl on one side.

Setup Fee: \$40.00(V) Repeat Setup Fee: \$20(V)

Item #	Size	Wt.	1	10	25	50
B120685CWT151A3	12" x 6"	0.60 lbs.	\$64.58	\$63.96	\$63.33	\$62.70
B12SQ85CWT151A1	12" x 12"	1.10 lbs.	\$101.03	\$100.05	\$99.07	\$98.09
B121885CWT151A1	12" x 18"	1.67 lbs.	\$121.51	\$106.21	\$99.90	\$94.88
B181285CWT151A1	18" x 12"	1.67 lbs.	\$132.44	\$131.15	\$129.87	\$128.58
B18SQ85CWT151A2	18" x 18"	2.40 lbs.	\$180.69	\$178.93	\$177.18	\$175.42
B182485CWT151A2	18" x 24"	3.40 lbs.	\$221.89	\$209.85	\$203.90	\$201.21
B241285CWT151A1	24" x 12"	2.40 lbs.	\$165.46	\$163.86	\$162.25	\$160.65
B241885CWT151A2	24" x 18"	3.40 lbs.	\$228.54	\$226.33	\$224.11	\$221.89
B361285CWT151A1	36" x 12"	4.40 lbs.	\$229.99	\$227.75	\$225.52	\$223.29 (R)

CUT VINYL WHITE ALUMINUM SIGNS W/ HOLES



When ordering, specify the width first and the height second.

Blanks have 1.5" radius corners.
Blanks have 3/8" holes top & bottom centered.
Holes are inset:
1.0" on 12" x 6" signs.
1.5" on 12" x 18", 18" x 12" signs.
3.0" on 18" x 24" and larger signs.
36" x 24" has 4 holes. 3" in and 6" over.

Price includes one color vinyl on one side.

Setup Fee: \$40(V) Repeat Setup Fee: \$20(V)

.080 White Non-Reflective Finish - Vinyl One Side

Item #	Size	1	25	50	100
B120683PWT251A3	12" x 6"	\$40.97	\$40.57	\$37.78	\$35.66
B121883PWT151A1	12" x 18"	\$75.42	\$69.55	\$66.55	\$65.06
B181283PWT151A1	18" x 12"	\$77.69	\$76.93	\$76.18	\$75.42
B182483PWT151A2	18" x 24"	\$128.34	\$119.37	\$114.26	\$108.92
B241883PWT151A2	24" x 18"	\$129.90	\$128.64	\$127.38	\$126.12
B243083PWT251A2	24" x 30"	\$238.84	\$236.52	\$211.19	\$209.10

(R)

Painted Finish Signs

Most powder coated white one side.

12" x 6", 24" x 24", 24" x 30" are white two sides.

.080 Thick

1-1/2" Radius on corners

3/8" top and bottom holes (2), centered.

.063 White Non-Reflective Finish - Vinyl One Side

Item #	Size	1	25	50	100
B121863PWT151A1	12" x 18"	\$66.78	\$62.11	\$59.77	\$58.57
B24SQ63PWT251A2	24" x 24"	\$168.39	\$166.75	\$151.73	\$150.22

(R)

Painted Finish Signs

Most powder coated white one side.

24" x 24" white two sides.

.063 Thick

1-1/2" Radius on corners

3/8" top and bottom holes (2), centered.

This is the standard thickness used for attaching to posts.

.040 White Non-Reflective Finish - Vinyl One Side

Item #	Size	1	25	50	100
B121843PWT251A1	12" x 18"	\$56.59	\$53.40	\$51.71	\$50.95
B182443PWT251A2	18" x 24"	\$95.80	\$94.86	\$89.09	\$88.21
B24SQ43PWT251A2	24" x 24"	\$123.33	\$122.13	\$120.93	\$119.73
B243643PWT251A2	24" x 36"	\$179.51	\$177.76	\$166.49	\$164.84
B362443PWT254AB	36" x 24"	\$179.51	\$177.76	\$166.49	\$164.84

(R)

Painted Finish Signs

Powder coated white both sides.

.040 thick.

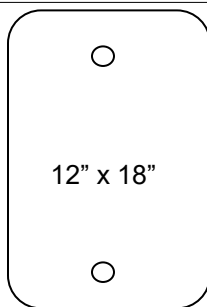
1-1/2" Radius on corners

3/8" top & bottom holes (2), centered

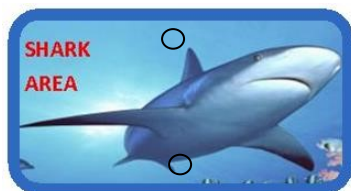
36" x 24" has 4 holes.
3" in and 6" over.

This is the standard thickness used for attaching to walls.

FULL COLOR WHITE ALUMINUM SIGNS W/ HOLES



12" x 18"



18" x 12"

When ordering, specify the width first and the height second.

Full color digitally printed media (vinyl) on a standard aluminum sign blank. Lamination included.

Blanks have 1.5" radius corners.

Blanks have 3/8" holes top & bottom centered.

Holes are inset:

1.0" on 12" x 6" signs.

1.5" on 12" x 18", 18" x 12" signs.

3.0" on 18" x 24", 24" x 18" and larger signs.

3.0", 6.0" 4 places on B362443PWT254AB

For two sides, multiply price for one side by 1.7.

Setup Fee: \$40(V) Repeat Setup Fee: \$20(V)

.080 White Non-Reflective Finish - Vinyl One Side

Item #	Size	1	25	50	100
B120683PWT251A3	12" x 6"	\$41.87	\$39.75	\$36.94	\$34.80
B121883PWT151A1	12" x 18"	\$77.18	\$69.63	\$66.59	\$65.08
B181283PWT151A1	18" x 12"	\$79.50	\$77.01	\$76.22	\$75.45
B182483PWT151A2	18" x 24"	\$133.08	\$117.32	\$111.07	\$108.48
B241883PWT151A2	24" x 18"	\$134.78	\$131.76	\$130.44	\$129.13
B243083PWT251A2	24" x 30"	\$248.41	\$220.25	\$200.20	\$198.20
B302483PWT251A2	30" x 24"	\$248.41	\$220.25	\$200.20	\$198.20

Painted Finish Signs

Powder coated white one side.

White only.

.080 Thick

1-1/2" Radius on corners

3/8" top and bottom holes (2), centered.

(R)

.063 White Non-Reflective Finish - Vinyl One Side

Item #	Size	1	25	50	100
B121863PWT151A1	12" x 18"	\$68.54	\$62.18	\$59.81	\$58.60
B24SQ63PWT251A2	24" x 24"	\$168.23	\$164.88	\$149.84	\$148.34

Standard Thickness

Painted Finish Signs

Powder coated white one side.

White only.

.063 Thick

1-1/2" Radius on corners

3/8" top and bottom holes (2), centered.

(R)

.040 White Non-Reflective Finish - Vinyl One Side

Item #	Size	1	25	50	100
B121843PWT251A1	12" x 18"	\$58.34	\$53.48	\$51.75	\$50.97
B182443PWT251A2	18" x 24"	\$100.67	\$97.98	\$89.79	\$83.54
B24SQ43PWT251A2	24" x 24"	\$123.16	\$120.26	\$119.04	\$117.85
B243643PWT251A2	24" x 36"	\$194.13	\$190.54	\$179.10	\$177.31
B362443PWT254AB	36" x 24"	\$194.13	\$190.54	\$179.10	\$177.31

Painted Finish Signs

Powder coated white both sides.

White only.

.040 thick.

1-1/2" Radius on corners

3/8" top & bottom holes (2), centered

B362443PWT254AB has 4 holes.

This is the standard thickness used for attaching to walls.

(R)

CUT VINYL COROPLAST SIGNS & STEP STAKES

STEP STAKES

Item #		1	25	50	100	250	500	1000
SS-8	Mini Stake	\$3.14	\$3.11	\$3.08	\$3.05	\$3.02	\$2.99	\$2.96
CORO1I	Economy Stake	\$7.07	\$6.93	\$6.80	\$4.57	\$4.48	\$4.24	\$4.08
CORO200	Heavy Duty Stake	\$13.97	\$13.70	\$13.43	\$13.25	\$12.99	\$11.24	\$11.19

(R)

CORO1I

- * 9 Gauge Steel
- * Zinc Plated
- * 10" wide - 30" Tall
- * 8" Prongs
- * Use with 4mm corrugated plastic signs.

SS-8

- * 9 Gauge Steel
- * 2" wide - 16" Tall
- * Sign will be 8" above ground.
- * Use with small low set corrugated plastic signs.

CORO200

- * 1/4" Round Steel Base
- * Galvanized - 6" wide base.
- * 10" Wide - 30" Tall
- * 10" Prongs - 9 Gauge Steel
- * Use with 4mm corrugated plastic signs

ESTATE SALE

**1:00 PM - 5:00 PM
Saturday**

Grommets: \$1.00(V) each

Prices includes one color vinyl.

Setup Fee: \$20(V)

Repeat Setup Fee: \$10(V)

ONE SIDE CUT VINYL WHITE CORPLAST SIGNS

Item #	Size	Flute Length	1	5	10	25	50	100	250
CP1824W	18" x 24"	24"	\$50.59	\$47.72	\$46.57	\$45.49	\$44.48	\$43.97	\$43.48
CP2418W	24" x 18"	18"	\$50.59	\$47.72	\$46.57	\$45.49	\$44.48	\$43.97	\$43.48
CP2424W	24" x 24"	24"	\$59.20	\$56.06	\$54.74	\$53.49	\$52.31	\$51.72	\$51.13

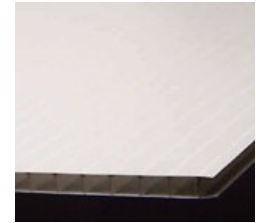
(R)

TWO SIDES CUT VINYL WHITE COROPLAST SIGNS

Item #	Size	Flute Length	1	5	10	25	50	100	250
CP1824W2	18" x 24"	24"	\$86.01	\$81.12	\$79.16	\$77.33	\$75.61	\$74.76	\$73.91
CP2418W2	24" x 18"	18"	\$86.01	\$81.12	\$79.16	\$77.33	\$75.61	\$74.76	\$73.91
CP2424W2	24" x 24"	24"	\$100.63	\$95.31	\$93.06	\$90.93	\$88.92	\$87.92	\$86.93

(R)

FULL COLOR DIGITALLY PRINTED COROPLAST SIGNS



Coroplast
A corrugated plastic sheet.
Moisture resistant.
4mm thick.

Grommets: \$1.00(V) each

Setup Fee: \$20(V)

Repeat Setup Fee: \$10(V)

ONE SIDE DIGITAL PRINTED COROPLAST SIGNS

SIZE	ITEM #	Flute Length	1	5	10	25	50	100	250
18" x 24"	DPCP1824W	24"	\$51.34	\$48.03	\$47.20	\$46.51	\$45.97	\$45.45	\$44.95
24" x 18"	DPCP2418W	18"	\$51.34	\$48.03	\$47.20	\$46.51	\$45.97	\$45.45	\$44.95
24" x 24"	DPCP2424W	24"	\$61.70	\$58.29	\$57.35	\$56.56	\$55.91	\$55.30	\$54.69

(R)

TWO SIDES DIGITAL PRINTED COROPLAST SIGNS

SIZE	ITEM#	Flute Length	1	5	10	25	50	100	250
18" x 24"	DPCP1824W2	24"	\$87.28	\$81.65	\$80.24	\$79.07	\$78.14	\$77.27	\$76.42
24" x 18"	DPCP2418W2	18"	\$87.28	\$81.65	\$80.24	\$79.07	\$78.14	\$77.27	\$76.42
24" x 24"	DPCD2424W2	24"	\$104.90	\$99.09	\$97.50	\$96.16	\$95.05	\$94.00	\$92.98

(R)

MAGNETIC SIGNS - CUT VINYL



BMS Landscape & Irrigation Service

Licensed & Insured

352-636-0519

Weather resistant White Magnetic Signs with your choice of one color cut vinyl lettering. Magnetic signs come standard with rounded corners. Easily applied and removable. Available in two thicknesses: Standard thickness is 1/32". Heavy duty thickness is 1/16". Custom sizes are available.

These Magnetic signs are designed to produce superior holding power on most metal surfaces.

Magnetic holding power of Standard (1/32") Sign:
85 lbs./sq. ft.

Magnetic holding power of Heavy Duty (1/16") Sign:
120 lbs./sq. ft.

Standard Magnetic Material (1/32" Thick)

Setup Fee: \$40(V) Repeat Setup Fee: \$20(V)

Item #	Size	Approx Wt	1	2	6	12	25	50	100	250
VMV3618	.030" x 6" x 18"	1.0 lbs	\$37.42	\$37.05	\$36.67	\$36.30	\$35.92	\$35.55	\$35.17	\$34.80
VMV3624	.030" x 6" x 24"	1.5 lbs	\$38.97	\$38.58	\$38.19	\$37.80	\$37.41	\$37.02	\$36.63	\$36.24
VMV31224	.030" x 12" x 24"	2.0 lbs	\$51.30	\$50.78	\$50.27	\$49.76	\$49.25	\$48.73	\$48.22	\$47.71
VMV31824	.030" x 18" x 24"	2.5 lbs	\$63.99	\$63.35	\$62.71	\$62.07	\$61.43	\$60.79	\$60.15	\$59.51

(R)

Heavy Duty Magnetic Material (1/16" Thick)

Setup Fee: \$40(V) Repeat Setup Fee: \$20(V)

Item #	Size	Appr. Wt	1	2	6	12	25	50	100
VMV6618	.060" x 6" x 18"	2.0 lbs	\$43.66	\$43.22	\$42.78	\$42.35	\$41.91	\$41.47	\$41.04
VMV6624	.060" x 6" x 24"	3.0 lbs	\$43.98	\$43.54	\$43.10	\$42.66	\$42.22	\$41.78	\$41.34
VMV61224	.060" x 12" x 24"	4.0 lbs	\$62.23	\$61.61	\$60.99	\$60.37	\$59.75	\$59.12	\$58.50
VMV61824	.060" x 18" x 24"	5.0 lbs	\$80.40	\$79.60	\$78.79	\$77.99	\$77.18	\$76.38	\$75.58

(R)

MAGNETIC SIGNS - FULL COLOR



Weather resistant Full Color Magnetic Signs are flexible and durable. Magnetic Signs come standard with rounded corners. Easily applied and removable. Available in two thicknesses: Standard thickness is 1/32". Heavy duty thickness is 1/16". Custom sizes are available.

- These Magnetic signs are designed to produce superior holding power on most metal surfaces.
- All Full Color Magnetic Signs are laminated for longer life.
- Either Matte or Gloss finish is available. If no preference is indicated, it will be a Gloss finish.
- Logos, photos, and special designs are available for an additional charge.

PMS Color Match: \$35(V) each color
Note: PMS Color Matches must be indicated on P.O.

Magnetic holding power of Standard (1/32") Sign:
85 lbs./sq ft.
Magnetic holding power of Heavy Duty (1/16") Sign:
120 lbs./sq ft.

Setup Fee: \$40(V)

Repeat Setup Fee: \$20(V)

Standard Magnetic Material (1/32" Thick)

Item #	Size	Approx Wt	1	2	6	12	25	50	100
VMD3618	.030" (1/32") x 6" x 18"	1.0 lbs	\$39.16	\$38.77	\$38.38	\$37.98	\$37.59	\$37.20	\$36.81
VMD3624	.030" (1/32") x 6" x 24"	1.5 lbs	\$43.90	\$43.46	\$43.02	\$42.58	\$42.14	\$41.71	\$41.27
VMD31224	.030" (1/32") x 12" x 24"	2.0 lbs	\$57.62	\$57.04	\$56.47	\$55.89	\$55.31	\$54.74	\$54.16
VMD31824	.030" (1/32") x 18" x 24"	2.5 lbs	\$73.96	\$73.22	\$72.48	\$71.74	\$71.00	\$70.26	\$69.52

(R)

Setup Fee: \$40(V)

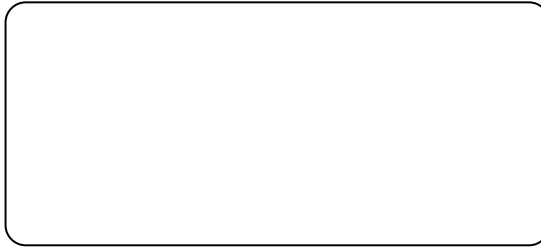
Repeat Setup Fee: \$20(V)

Heavy Duty Magnetic Material (1/16" Thick)

Item #	Size	Approx. Wt	1	2	6	12	25	50	100
VMD6618	.060" (1/16") x 6" x 18"	2.0 lbs	\$45.16	\$44.71	\$44.26	\$43.81	\$43.36	\$42.91	\$42.46
VMD6624	.060" (1/16") x 6" x 24"	3.0 lbs	\$49.58	\$49.08	\$48.58	\$48.09	\$47.59	\$47.10	\$46.60
VMD61224	.060" (1/16") x 12" x 24"	4.0 lbs	\$68.97	\$68.28	\$67.59	\$66.90	\$66.21	\$65.52	\$64.83
VMD61824	.060" (1/16") x 18" x 24"	5.0 lbs	\$90.99	\$90.08	\$89.17	\$88.26	\$87.35	\$86.44	\$85.53

(R)

BLANK MAGNETIC SIGN MATERIAL



Weather resistant White Magnetic Blank Sign Material. Magnetic signs come standard with rounded corners. Easily applied and removable. Available in two thicknesses: Standard thickness is 1/32". Heavy duty thickness is 1/16". Custom sizes are available.

These Magnetic signs are designed to produce superior holding power on most metal surfaces.

Magnetic holding power of Standard (1/32") Sign:
85 lbs./sq. ft.
Magnetic holding power of Heavy Duty (1/16") Sign:
120 lbs./sq. ft.

Standard Magnetic Material (1/32" Thick)

Item #	Size	Approx Wt	1	2	6	12	25	50	100	250
BMM3618	.030" x 6" x 18"	1.0 lbs	\$15.40	\$15.25	\$14.94	\$14.63	\$14.32	\$14.02	\$13.86	\$13.71
BMM3624	.030" x 6" x 24"	1.5 lbs	\$16.18	\$16.02	\$15.69	\$15.37	\$15.05	\$14.72	\$14.56	\$14.40
BMM31224	.030" x 12" x 24"	2.0 lbs	\$22.91	\$22.68	\$22.22	\$21.76	\$21.30	\$20.85	\$20.62	\$20.39
BMM31824	.030" x 18" x 24"	2.5 lbs	\$29.60	\$29.30	\$28.71	\$28.12	\$27.53	\$26.93	\$26.64	\$26.34

(R)

Heavy Duty Magnetic Material (1/16" Thick)

Item #	Size	Appr. Wt	1	2	6	12	25	50	100
BMM6618	.060" x 6" x 18"	2.0 lbs	\$19.77	\$19.57	\$19.17	\$18.78	\$18.38	\$17.99	\$17.79
BMM6624	.060" x 6" x 24"	3.0 lbs	\$21.19	\$20.98	\$20.56	\$20.13	\$19.71	\$19.28	\$19.07
BMM61224	.060" x 12" x 24"	4.0 lbs	\$32.93	\$32.60	\$31.95	\$31.29	\$30.63	\$29.97	\$29.64
BMM61824	.060" x 18" x 24"	5.0 lbs	\$44.60	\$44.16	\$43.27	\$42.37	\$41.48	\$40.59	\$40.14

(R)

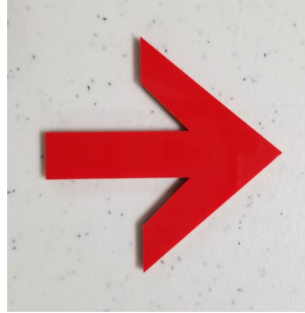
Other Sizes

Item #		Sq In.	Sq Ft
BMM30	.030 (1/32") Material	\$0.112	\$16.18
BMM60	.060 (1/16") Material	\$0.15	\$21.19

(R)

CUSTOM ACRYLIC SHAPES

For an adhesive back,
add 10%.
For Hook or Loop on back,
See page 409.




Maximum Size:
25" L-R x 18" T-B

Material: Chemcast .118 Acrylic

Colors
Red (2157)
Orange (2119)

Other colors may be
available upon request.

 **WARNING:** Cancer
and Reproductive Harm -
www.P65Warnings.ca.gov

Capable of cutting
most shapes. Holes
can be cut also.

Setup Fee: \$20(V)

Repeat Setup Fee: \$10(V)

Item #	Sq. In	1	2	3	5	10	25	50	100	250	500
VOS1	Up to 6	\$10.48	\$10.17	\$10.11	\$10.05	\$9.99	\$9.93	\$9.87	\$9.81	\$9.75	\$9.69
VOS7	6.1 - 12	\$11.63	\$11.29	\$11.22	\$11.15	\$11.08	\$11.02	\$10.95	\$10.88	\$10.81	\$10.75
VOS13	12.1 - 24	\$14.86	\$14.42	\$14.34	\$14.25	\$14.16	\$14.08	\$13.99	\$13.90	\$13.82	\$13.73
VOS25	24.1 - 36	\$18.57	\$18.03	\$17.92	\$17.81	\$17.71	\$17.60	\$17.49	\$17.38	\$17.27	\$17.17
VOS37	36.1 - 48	\$22.63	\$21.97	\$21.84	\$21.71	\$21.58	\$21.44	\$21.31	\$21.18	\$21.05	\$20.92
VOS49	48.1 - 60	\$26.55	\$25.77	\$25.62	\$25.46	\$25.31	\$25.15	\$25.00	\$24.84	\$24.69	\$24.53
VOS61	60.1 - 72	\$30.03	\$29.15	\$28.98	\$28.80	\$28.63	\$28.45	\$28.28	\$28.10	\$27.93	\$27.75
VOS73	72.1 - 84	\$33.04	\$32.08	\$31.89	\$31.69	\$31.50	\$31.31	\$31.12	\$30.92	\$30.73	\$30.54
VOS85	84.1 - 100	\$37.92	\$36.81	\$36.59	\$36.37	\$36.15	\$35.93	\$35.71	\$35.49	\$35.27	\$35.05
VOS101	100.1 - 150	\$53.56	\$52.00	\$51.69	\$51.38	\$51.06	\$50.75	\$50.44	\$50.13	\$49.82	\$49.50
VOS151	150.1 - 200	\$67.76	\$65.79	\$65.39	\$65.00	\$64.60	\$64.21	\$63.82	\$63.42	\$63.03	\$62.63
VOS201	200.1 - 250	\$82.42	\$80.01	\$79.53	\$79.05	\$78.57	\$78.09	\$77.61	\$77.13	\$76.65	\$76.17
VOS251	250.1 - 300	\$94.18	\$91.44	\$90.89	\$90.34	\$89.79	\$89.25	\$88.70	\$88.15	\$87.60	\$87.05
VOS301	300.1 - 350	\$106.13	\$103.04	\$102.42	\$101.80	\$101.19	\$100.57	\$99.95	\$99.33	\$98.71	\$98.09
VOS351	350.1 - 400	\$117.74	\$114.31	\$113.62	\$112.94	\$112.25	\$111.57	\$110.88	\$110.19	\$109.51	\$108.82
VOS401	400.1 - 450	\$129.33	\$125.56	\$124.81	\$124.05	\$123.30	\$122.55	\$121.79	\$121.04	\$120.29	\$119.53

(R)

DISCONTINUED CUSTOM STREET SIGNS

These are discontinued street signs that may not meet the governments requirements as street signs or may have been discontinued for other reasons. Includes one color of vinyl lettering.

RA Type I Engineer Grade Prismatic Reflective Sheeting

This material reflects when light hits it at night. This material has a seven year lifespan. This material is applied, by the manufacturer, on both surfaces of our standard .080 thick aluminum sign.



Setup Fee: \$20(V)

Repeat Setup Fee: \$10(V)

Copy Change Fee: \$3(V)

RA Type I **Engineer Grade** Prismatic (Green Only)

Standard Vinyl Lettering

Item #	Size	One Side	Two Sides
B240685EGR28000S	24" x 6"	\$74.61	\$104.45
B300685EGR28000S	30" x 6"	\$85.87	\$120.22
B360685EGR28000S	36" x 6"	\$97.11	\$135.95

(R)

Reflective Vinyl Lettering

Item #	Size	One Side	Two Sides
B240685EGR28000R	24" x 6"	\$81.39	\$113.94
B300685EGR28000R	30" x 6"	\$94.35	\$132.09
B360685EGR28000R	36" x 6"	\$107.28	\$150.19

Baked Enamel Paint (Green Only)

Standard Vinyl Lettering

Item #	Size	One Side	Two Sides
630FP	30" x 6"	\$60.21	\$84.29
636FP	36" x 6"	\$73.83	\$103.36
930FP	30" x 9"	\$87.42	\$122.39

(R)

Reflective Vinyl Lettering

Item #	Size	One Side	Two Sides
630FP	30" x 6"	\$65.21	\$91.29
636FP	36" x 6"	\$78.83	\$110.36
930FP	30" x 9"	\$92.42	\$129.39