


DUETS LASER XT ENGRAVEABLE PLASTIC

Material: Micro Surfaced Impact Acrylic
Thickness: .060"

This material can be used for name badges, name plates, wall signs, etc.
 The acrylic is UV stable and can be used indoor or outdoor.

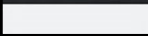
 Black Surface
White Core
L-100-116



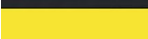
 Red Surface
White Core
L-102-116



 White Surface
Black Core
L-111-106



 Yellow Surface
Black Core
L-116-106



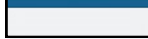
 Blue Surface
White Core
L-104-116



 White Surface
Red Core
L-111-136



 White Surface
Blue Core
L-111-156



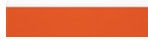
 White Surface
Spring Green Core
L-111-176



 White Surface
Evergreen Core
L-111-186



 Orange Surface
White Core
L-103-116



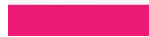
 Red Surface
Yellow Core
L-102-146



 Maroon Surface
White Core
L-117-116



 Pink Surface
White Core
L-119-116




 Pink Surface
Black Core
L-119-106



 Light Blue Surface
White Core
L-121-116



 Grey Surface
White Core
L-118-116



 Blue Surface
Yellow Core
L-104-146




 Sapphire Surface
White Core
L-105-116



 Purple Surface
White Core
L-105-116



 Black Surface
Orange Core
L-100-626



 Spring Green Surface
White Core
L-107-116



 Light Green Surface
White Core
L-122-116



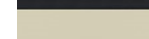
 Evergreen Surface
White Core
L-108-116



 Beige Surface
Chocolate Brown Core
L-114-166



 Khaki Surface
Black Core
L-115-106

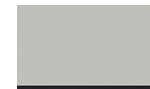


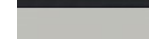
 Brown Surface
White Core
L-110-116



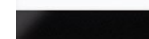
 Choc. Brown Surface
White Core
L-109-116



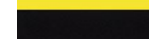
 Cool Grey Surface
Black Core
L-113-106



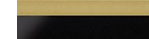
 Gloss Black Surface
White Core
L-101-116

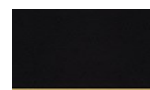


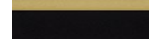
 Black Surface
Yellow Core
L-100-146



 Gloss Black Surface
Gold Core
L-100-126



 Black Surface
Gold Core
L-100-126



 Black Surface
Silver Core
L-100-196



DUETS LASER ENGRAVEABLE PLASTIC

Metals XT

Material: Micro Surfaced Impact Acrylic

Thickness: .060"

Usage: Outdoor and Indoor

This material can be used for name badges, name plates, wall signs, etc.
The acrylic is UV stable and can be used indoor or outdoor.



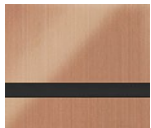
Brushed Old Gold Surface
Red Core
L-903-136



Brushed Old Gold Surface
Blue Core
L-903-156



Brushed Old Gold Surface
Black Core
L-903-106



Brushed Copper Surface
Black Core
L-904-106



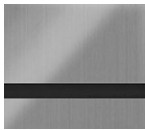
Brushed Stainless Surface
Red Core
L-901-136



Brushed Stainless Surface
Blue Core
L-901-156



Brushed Stainless Surface
Black Core
L-901-106



Brushed Nickel Surface
Black Core
L-902-106

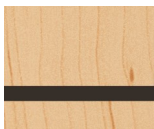
Laser Indoor

Material: Micro Surfaced Impact Acrylic

Thickness: .060"

Usage: Indoor

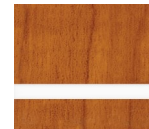
This material can be used for name badges, name plates, wall signs, etc.
The acrylic is not recommended for outdoor use.



Birch Surface
Chocolate Brown Core
L-W52-166



Birch Surface
Black Core
L-W52-106



Cherry Surface
White Core
L-W50-116



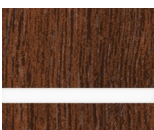
Cherry Surface
Almond Core
L-W50-206



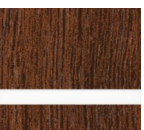
Royal Mahogany Surface
White Core
L-W51-116



Royal Mahogany Surface
Almond Core
L-W51-206



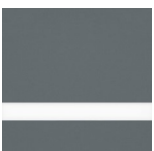
Black Walnut Surface
White Core
L-W11-116



Walnut Surface
White Core
L-W10-116



Brushed Satin Gold Surface
Black Core
L805-106



Dove Grey Surface
White Core
L-112-116



Navy Surface
White Core
L-106-116



Brushed Aluminum Surface
Black Core
L801-106

TROPHY PLATE MATERIAL

FX Flexible Plastic

Material: Micro Surfaced Impact Acrylic

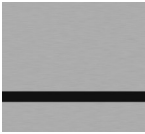
Thickness: .020"

Usage: Indoor

This material can be used for trophy plates and medal inserts.
Not for outdoor use. Has an adhesive back.



Euro Gold Surface
Black Core
FX-G
Brushed Finish



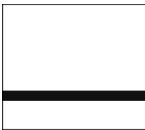
Satin Silver Surface
Black Core
FX-S
Brushed Finish



Copper Surface
Black Core
FX-Z
Brushed Finish



Gloss Black Surface
Gold Core
FX-BK



Matte White Surface
Black Core
FX-W



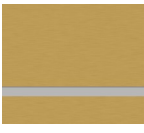
Fuchsia Surface
Black Core
FX-F
Metallic Finish



Matte Blue Surface
Gold Core
FX-BL



Red Surface
Gold Core
FX-R



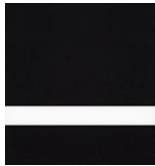
Euro Gold Surface
Silver Core
FX-GS
Brushed Finish



Gloss Black Surface
Silver Core
FX-BS



Matte Black Surface
Gold Core
FX-MAT



Black Surface
White Core
L-100-112
Duets Contours
Flexible Sheet Stock

FONT SELECTION

FONT (SIZE 12 SHOWN BELOW)	Screen Printing	Pad Printing	Embroidery	Vinyl Letters	Dye Sub- limation	Laser Eng- raving
Arial	X	X	X	X	X	X
Balloons BD BT-Caps Only	X	X	X	X	X	X
<i>Brush Script</i>	X	X	X	X	X	X
Clarendon	X	X	X	X	X	X
College Regular	X	X			X	X
Comic Sans MS	X	X	X	X	X	X
Commercial Script	X	X	X	X	X	X
Dawn Castle	X	X	X	X	X	X
English 111 Vivace BJ	X	X			X	X
Helvetica Med	X	X	X	X	X	X
Impact	X	X		X	X	X
Impress BT	X	X	X	X	X	X
Kids	X	X	X	X	X	X
Lithograph-Caps	X	X	X	X	X	X
<i>Lucida Handwriting</i>	X	X		X	X	X
<i>Monotype Corsiva</i>	X	X	X	X	X	X
Murray Hil DEE	X	X	X		X	X
Olde English	X	X			X	X
StageCoach	X	X		X	X	X
Times New Roman	X	X	X	X	X	X
University Roman	X	X		X	X	X

MANY OTHER FONTS ARE AVAILABLE UPON REQUEST

FONT SIZE

Embroidery: Minimum Font size is 3/8" high.
Some fonts may be required to be larger for readability.

Vinyl Letters: Minimum Font size is 1/2" high.

Name Badges: Maximum Font size is determined by badge size and badge area.

Arial	8	9	10	11	12	14	16	18	20	22
UPPER CASE	ABC	ABC	ABC	ABC	ABC	ABC	ABC	ABC	ABC	ABC
lower case	abc	abc	abc	abc	abc	abc	abc	abc	abc	abc

ACCEPTABLE FILES

File	Screen Printing	Pad Printing	Embroidery	Vinyl Lettering	Dye Sublimation	Laser Printing
Corel Curves	X	X	XΦ	X	X	X
Tiff File Artwork	XΦ	XΦ	XΦ	XΦ	X	XΦ
JPEG Artwork	XΦ	XΦ	XΦ	XΦ	X	XΦ
DST File Digitized File			X X			
EPS File	X	X	XΦ	X	X	X
CDR File	X	X	X	X	X	X
PDF	X	X	XΦ	X	X	X

Φ DESIGN FEE MAY APPLY

TERMS AND CONDITIONS

TERMS:

All orders are on a credit card, money order, or prepaid basis.

We accept the following credit cards: Discover, Visa, American Express, & Master Card.

ASI Distributors may be eligible for terms when approved.

CATALOG ERRORS/ OMISSIONS

Prices are subject to change without notice. We reserve the right to discontinue any item at any time without notice. We will not be held responsible for any typographic errors and/ omissions in this catalog.

ORDERING INFORMATION:

All Purchase Orders must be faxed, e-mailed or mailed. All changes must be confirmed in writing. A change will generally effect the delivery date and may alter the original charges. Phone orders will be accepted only after our Sales Acknowledgement is faxed, signed & returned.

ORDERING

ACKNOWLEDGEMENT: Orders will be confirmed via: fax, e-mail, or phone upon receipt of all pertinent information.

CHANGES:

All orders are considered firm upon receipt of a signed Purchase Order or upon receipt of a signed Sales Order Acknowledgement. Any changes to the order, once production has begun, will be billed for the work completed. Any additional work required by the change, will also be invoiced.

Changes in quantity prior to production are acceptable. Any changes in quantity "after the production is completed" will be treated as a separate order and billed accordingly.

HOLDS: Putting a job on hold or taking it off hold must be presented in writing and acknowledged in writing by All-Secure Graphics.

CANCELLATIONS: Cancellations must be presented in writing and acknowledged in writing by All-Secure Graphics. If a cancellation occurs, all costs incurred up to the time of the cancellation will be invoiced.

RETURNS: Anything being returned must be shipped 15 days from receipt of products. Returns must be approved prior to shipping. Any products not approved will be returned. Items approved by the customer and not defective will not be accepted.

RESTOCKING CHARGE: A 20% restocking charge will be charged on returned blanks.

ORDERS LESS THAN MINIMUM:
\$25.00(v)

ARTWORK REQUIREMENTS

The quality of the imprint depends on the quality of the artwork supplied to us.

ELECTRONIC ART: We accept electronic art via e-mail, CD, or 3-1/2" floppy. Disks must be PC formatted. We can accept files created by Corel Draw, Adobe Illustrator, or Adobe Photoshop. Also acceptable are .tif, .eps, .jpg, and .pdf file formats. File compression is not recommended.

VINYL CUTTING: Requires an EPS or CDR file.

LASER ENGRAVING, PAD PRINTING, SCREEN PRINTING, or DYE SUBLIMATION: Requires Corel Draw or other line art (CDR or EPS).

DESIGN ART APPROVAL: Proofs will be faxed or emailed to the customer for approval signature. Orders will not be placed into production until artwork is approved.

Customer's signature on the Design Approval form assumes total responsibility for typographical errors, color schemes, and imprint placement on the product.

PRE-PRODUCTION SAMPLES:

The cost of pre-production samples is: one piece pricing plus setup costs and plus shipping. Random samples are generally available upon request. Cost may apply for some samples.

TRADEMARKS & LOGOS: By approving the artwork for imprinted orders, the customer warrants and authorizes the use of any included trademarks or logos.

EMBROIDERY: Digitized artwork can be accepted on a .dst file. Otherwise, we will digitize the file at an additional cost.

PMS COLOR MATCH:

\$35(v) per color. Exact match cannot be guaranteed.

ARTWORK CHARGES:

\$80.00/hour (v), one quarter hour minimum. Price includes a paper proof to be approved before production.

Note: Customer will not be charged for artwork unless notified.

TERMS AND CONDITIONS

EMBROIDERY INFORMATION

STITCH STANDARD: Prices include up to 7 thread colors and 5000 stitches in one location. If the design requires more stitches or thread colors, we will provide a quote before proceeding with the order.

PERSONALIZATION:

Add \$8.00 (V)

Note: Names and initials should be between 3/8" and 1" high.

THREAD: Add \$1.00(V) per piece for metallic thread.

DIGITIZING CHARGES: All new orders will be quoted at \$60.00 (V) per hour upon reviewing artwork.

SHIPPING

OVER/UNDER RUNS: When ordering promotional products, +/- 5% will be shipped and invoiced accordingly. Exact quantity orders will require an additional \$20(V).

We will invoice and ship the exact quantity ordered on other items.

FLORIDA SALES TAX LAW: Sales made to an un-registered out-of-state dealer when the product is delivered in Florida must have sales tax added.

Sales sold in Florida to customers without a resale certificate must have sales tax added.

Sales sold to a dealer outside the state of Florida and delivered outside the state of Florida, requires no sales tax.

PRODUCTION: Production begins once the order, the artwork, and the terms of payment are approved. Standard production time is 7 - 10 working days. Production time on extra large orders will be quoted.

GUARANTEE: All merchandise manufactured is unconditionally guaranteed to be free from defects of material and workmanship. Any defective product will be replaced.

SHIPPING: F.O.B. our factory in Eustis, Florida. Shipment will be via UPS Ground unless specified otherwise. Once shipment has left our factory, title is transferred to the recipient.

Split shipments are \$6.00 per destination.

Due to fluctuating gas prices, shipping estimates on Sales Order Acknowledgements are only estimates. Actual shipping costs will be invoiced.

Local deliveries will require a \$0.72 per mile charge.

A \$8.00 handling fee will be charged when shipping **FedEx**.

A \$10.00 handling fee will be charged for shipments outside of the United States.

RETURN OF GOODS: We will not accept returned merchandise unless it is approved by the factory first.

Any product decorated by the customer cannot be returned. It is the customer's responsibility to ensure the product is correct before decorating, imprinting, etc.

DISCLAIMER

REGISTRATION: Variance in registration is $\pm 1/32"$.

COTTON FABRICS: Due to manufacturing processes, the shade, color, texture, size, or construction cannot be guaranteed from lot to lot.

GENERAL PRODUCTS: Size, shape, and color, may vary on some products due to manufacturing processes. These minor conditions must be considered acceptable.

LETTER VISIBILITY CHART

LETTER HEIGHT (INCHES)	DISTANCE FOR BEST IMPACT (FEET)	MAXIMUM READABLE DISTANCE (FEET)
3"	30'	100'
4"	40'	150'
6"	60'	200'
8"	80'	350'
9"	90'	400'
10"	100'	450'
12"	120'	525'
15"	150'	630'
18"	180'	750'
24"	240'	1000'
30"	300'	1250'
36"	360'	1500'
42"	420'	1750'
48"	480'	2000'
54"	540'	2250'
60"	600'	2500'